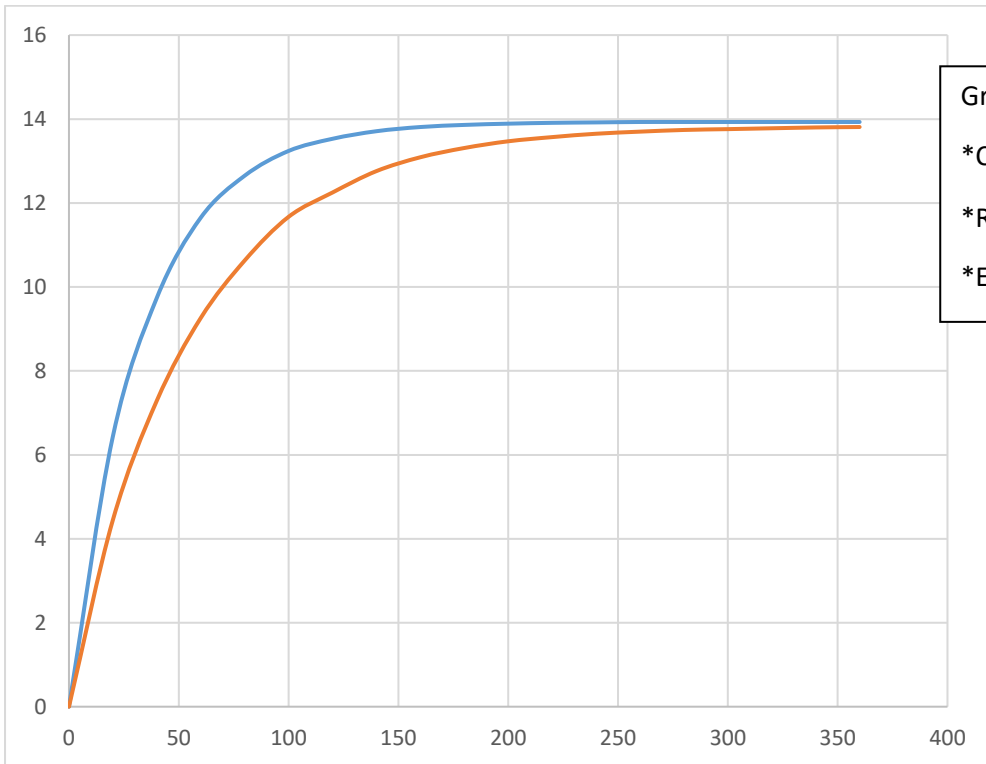
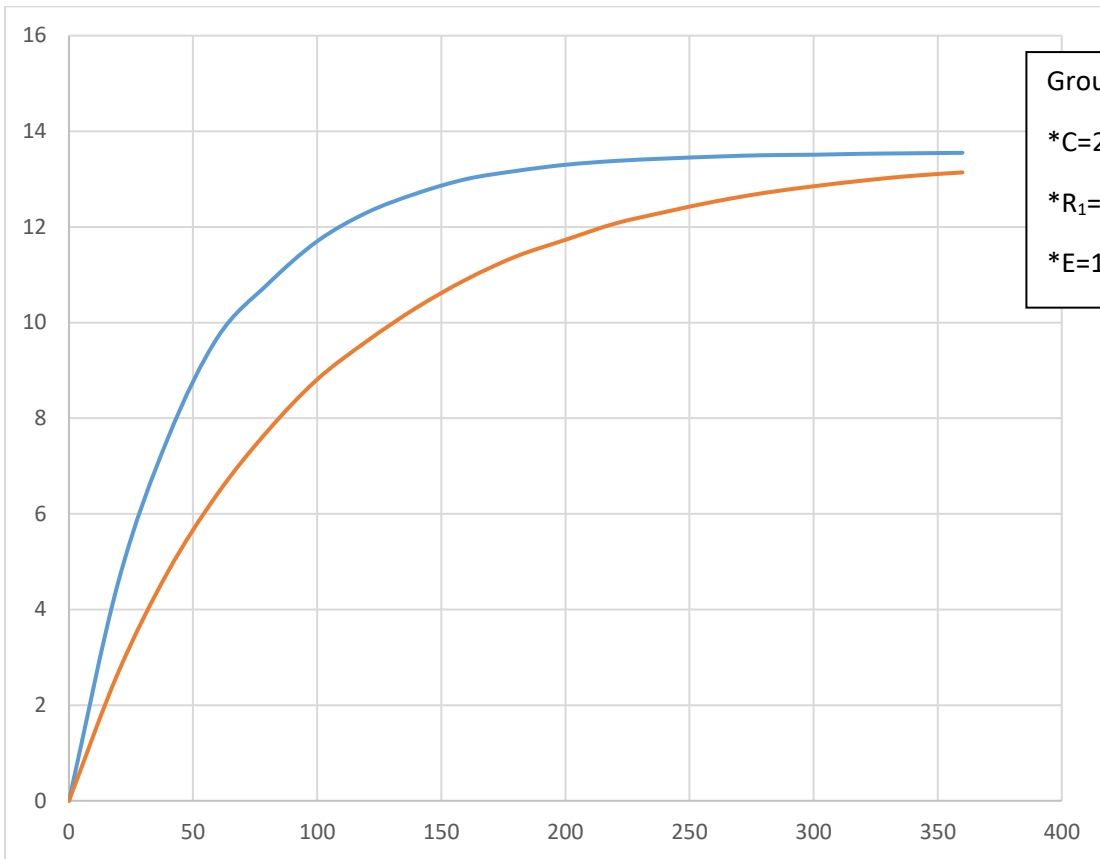


Groupe-1-
 *C=2200 μ F
 *R₁=20K Ω / R₂=40K Ω
 *E=14 V

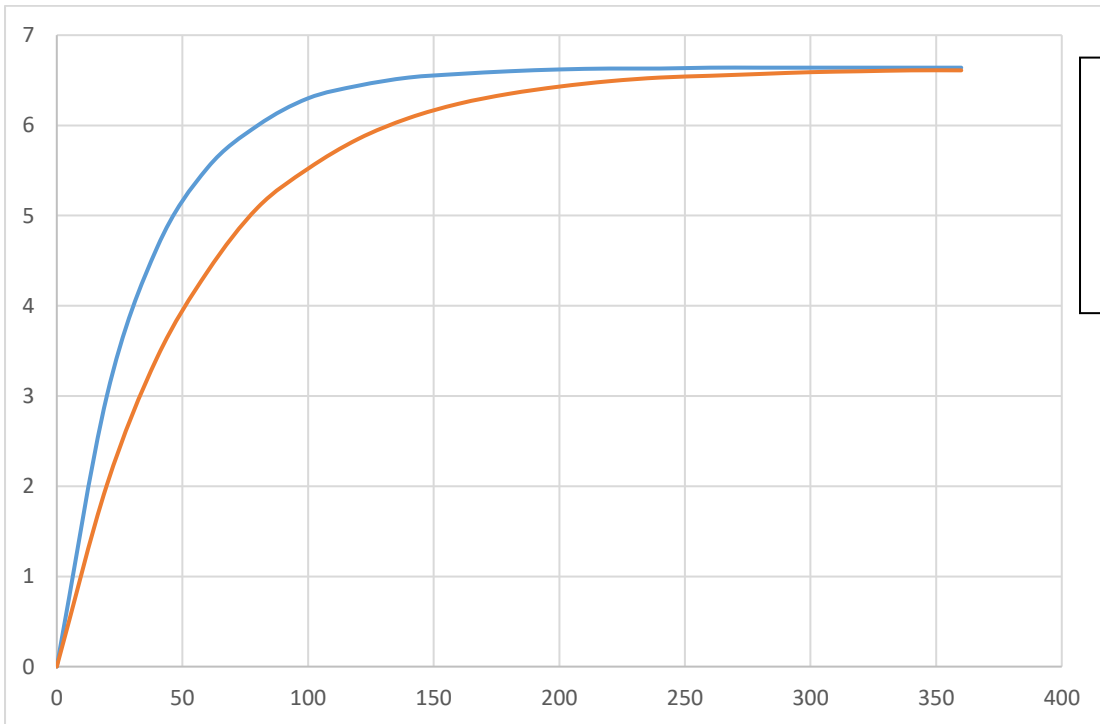


Groupe-2-
 *C=1000 μ F
 *R₁=30K Ω / R₂=50K Ω
 *E=14 V





Groupe-3-
 *C=2200 μ F
 *R₁=20K Ω / R₂=40K Ω
 *E=14 V



Groupe-4-
 *C=1000 μ F
 *R₁=30K Ω / R₂=50K Ω
 *E=14 V

